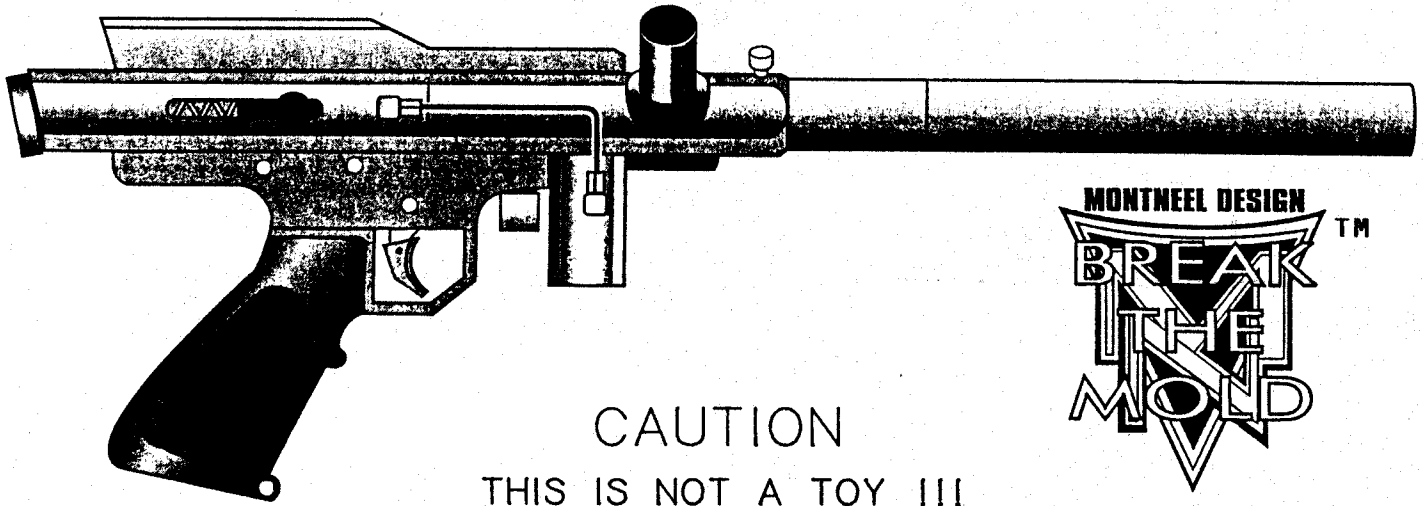


Z-1™ / MEGA-Z™ SEMI-AUTOS



CAUTION
THIS IS NOT A TOY !!!

PLEASE READ INSTRUCTIONS CAREFULLY PRIOR TO USING THIS GUN.
IF MISUSED, IT CAN CAUSE SERIOUS INJURY, BLINDNESS OR DEATH.

Protective eye devices and ear protection should be worn at all times during play or while cleaning the CO2 pistol. Never look into the barrel. If accidentally hit in the eye, it could cause blindness or death.

This CO2 pistol is for use by persons 18 years of age or older.
Remove all CO2 from gun before disassembling.

OPERATING INSTRUCTIONS

1) SAFETY

Pull knob acts as the safety. Forward is "SAFE" position, pulled back, gun is cocked and ready to fire. To put gun in "SAFE" position, release bolt knob forward by hand while pulling the trigger.

NOTE: BE SURE THERE ARE NO PAINTBALLS IN PAINTGUN.

2) FIRING

Pull bolt knob back to firing position, aim and pull trigger.

CAUTION: Never fire gun with front receiver removed.

NOTE: Parts list for front receiver enclosed.

ALSO: Never dry fire your gun it may cause damage to the internal parts.

3) VELOCITY ADJUSTING

A) In order to get the proper chronograph reading shoot

10 to 15 rapid shots up in the air until snow comes out of the barrel.

B) Clockwise lowers feet per second

C) Counter-clockwise raises feet per second

MONTNEEL DESIGN, INC

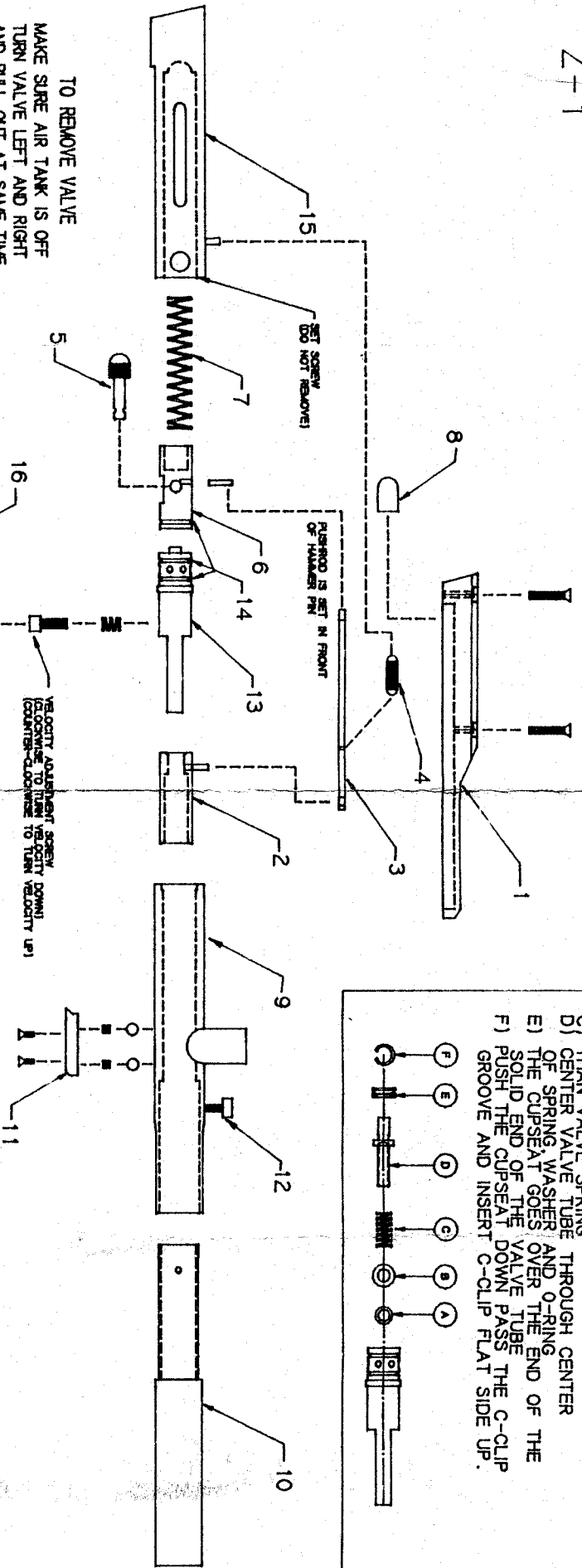
304 CHURCH ST. PO BOX 645

NEW MILFORD, PA 18834

(717) 465-9480

MEGA-Z™ SEMI-AUTO PAINTBALL GUN

- VALVE ASSEMBLY**
- PLACE 010 O-RING IN FIRST
 - SECOND PLACE BRASS WASHER
 - THAN VALVE SPRING
 - CENTER VALVE TUBE THROUGH CENTER
 - OF SPRING WASHER AND O-RING
 - THE CUPSEAT GOES OVER THE END OF THE
 - PUSH THE CUPSEAT DOWN TUBE
 - GROOVE AND INSERT C-CLIP FLAT SIDE UP.
-



TO REMOVE VALVE
 MAKE SURE AIR TANK IS OFF
 TURN VALVE LEFT AND RIGHT
 AND PULL OUT AT SAME TIME.
 (VALVE IS HELD IN BY ORINGS
 NOT SCREWS)

IF VALVE IS DIFFICULT TO REMOVE
 PLACE TWO DROPS OF OIL IN HOLE
 OF BACK BOTTLE ADAPTER.
 FIRE A FEW SHOTS OF AIR THROUGH
 GUN. THEN REMOVE VALVE.

**NOTE: AFTER FOLLOWING THIS
 PROCEDURE MAKE SURE
 YOU CLEAN EXCESSIVE OIL FROM
 FRONT BOLT. FRONT RECEIVER
 AND BARREL.**

- | | |
|-----------------|----------------------|
| 1 SIGHT RAIL | 9 FRONT RECEIVER |
| 2 FRONT BOLT | 10 BRASS BARREL |
| 3 PUSH ROD | 11 ANTI DOUBLE FEED |
| 4 RETURN SPRING | 12 BARREL S. PLUNGER |
| 5 PULL KNOB | 13 VALVE BODY |
| 6 HAMMER | 14 ORING SLOTS |
| 7 MAIN SPRING | 15 BACK RECEIVER |
| 8 BUMPER | 16 TRIGGER HOUSING |

MONTNEEL DESIGN, INC. WARRANTS TO REPAIR ANY PARTS FOUND THAT SHOULD CAUSE THIS GUN NOT TO FUNCTION PROPERLY DURING THE FIRST 12 MONTHS FROM THE ORIGINAL DATE OF PURCHASE. ALL WARRANTY WORK WILL BE PERFORMED BY MONTNEEL DESIGN, INC. MODIFICATIONS OR MISUSE WILL VOID YOUR WARRANTY. SPRINGS, O-RINGS, AND STRIPPED THREADS ARE NOT COVERED UNDER WARRANTY.